



HELLO

We have around twenty years experience of printing graphics and signage for installation, and it is this knowledge and expertise that enables us to deliver the quality of service we have become renowned for across the UK.

Adrian Rushton
Managing Director

/CANCER RESEARCH UK

WE WORKED WITH CONRAN DESIGN GROUP TO PRINT AND INSTALL A SERIES OF OFFICE GRAPHICS WITHIN SEVERAL AREAS AT CANCER RESEARCH UK HQ.

Cancer Research UK is set within the stunning Angel Building in Central London. We helped Conran Design Group to deliver a wide variety of creative office graphics from full printed window graphics to bespoke, illuminated cabinets.

We printed designs to fabric, optically clear window film, dusted film and vinyl with graphics relating to their important research. This included additional embellishments such as cut acrylic letters mounted to fabric walls and cut vinyl text for doors.

We also built and fitted a full wall cabinet with internally lit cupboards with lockable glass doors to display significant objects to the charity.

This entire project was delivered over four phases, using our professional installation team during the evenings to minimise disruption.

EVERY MOMENT COUNTS

Our scientists are
at the cutting edge
of research into
cancer biology.

Their pioneering work will underpin
the treatments of the future.



WORLD CANCER DAY

On February 4th 2015,
World Cancer Day,
we called on the
Nation to unite in the
fight against cancer.



ALL JOIN TOGETHER

Despite daily news reports of cancer, the UK has the lowest
cancer death rate in Europe.



UK SMOKEOUT

In 2000 the successful
campaign to reduce smoking
led to over 100,000 lives saved
and the UK is now a
safer place to live.



LEADING THE DEVELOPMENT OF THERAPIES

Dozens of new therapies
are being developed at
the Cancer Research UK
Centres for research.



SETTING THE STANDARD FOR PLAIN CIGARETTE PACKAGING

In 2015, MPs voted in favour of
standard cigarette packs - a huge
victory for public health.

MICROSCOPE

Microscopes are the primary tool used to study cells
and understand how they work.



Hinged and lockable glass doors with colour coordinated vinyl graphics applied to the back of the recess.



Printed and cut vinyl text applied to the face of the cabinet to act as legends for each feature.

EVERY MOMENT COUNTS



WORLD CANCER DAY

On February 4th 2015, World Cancer Day was celebrated on the radio to mark the fight against cancer.



ALL JOIN TOGETHER

Over 100 people have joined in support of our 'All Join Together' campaign to mark World Cancer Day.



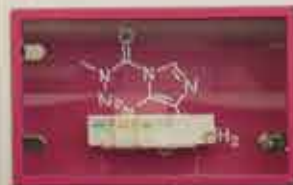
OUR SCIENTISTS

In 2015, our scientists launched a new fund to support the research of people with brain tumours.



LEADING THE DEVELOPMENT OF TEMAZOLOMIDE

Our scientists led the development of all new lead compounds as the starting point for the development of people with brain tumours.



CITIZEN SCIENCE AWARD

The award-winning Citizen Science programme is helping our scientists to understand more about the world around us.



CELLAR MODELS

The 1000 Cellar models are a set of 1000 models of cells.



Each recess was internally lit with low voltage LEDs. Chosen cupboards were painted to match the brand colours and some had vinyl text applied to the glass face.







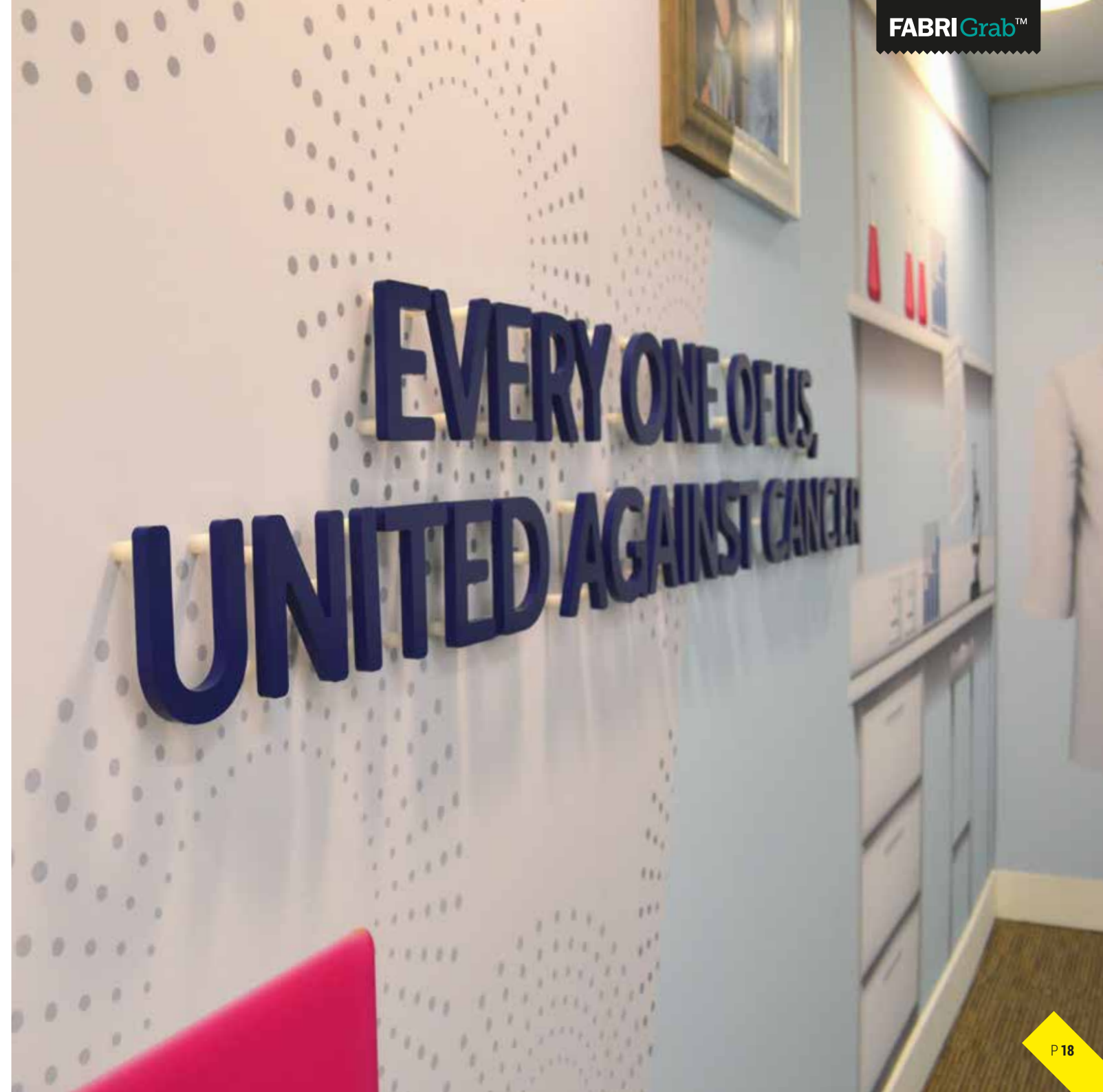
Printed dusted window film with cut detail was applied to the full height of the glass to add privacy to specific meeting rooms.



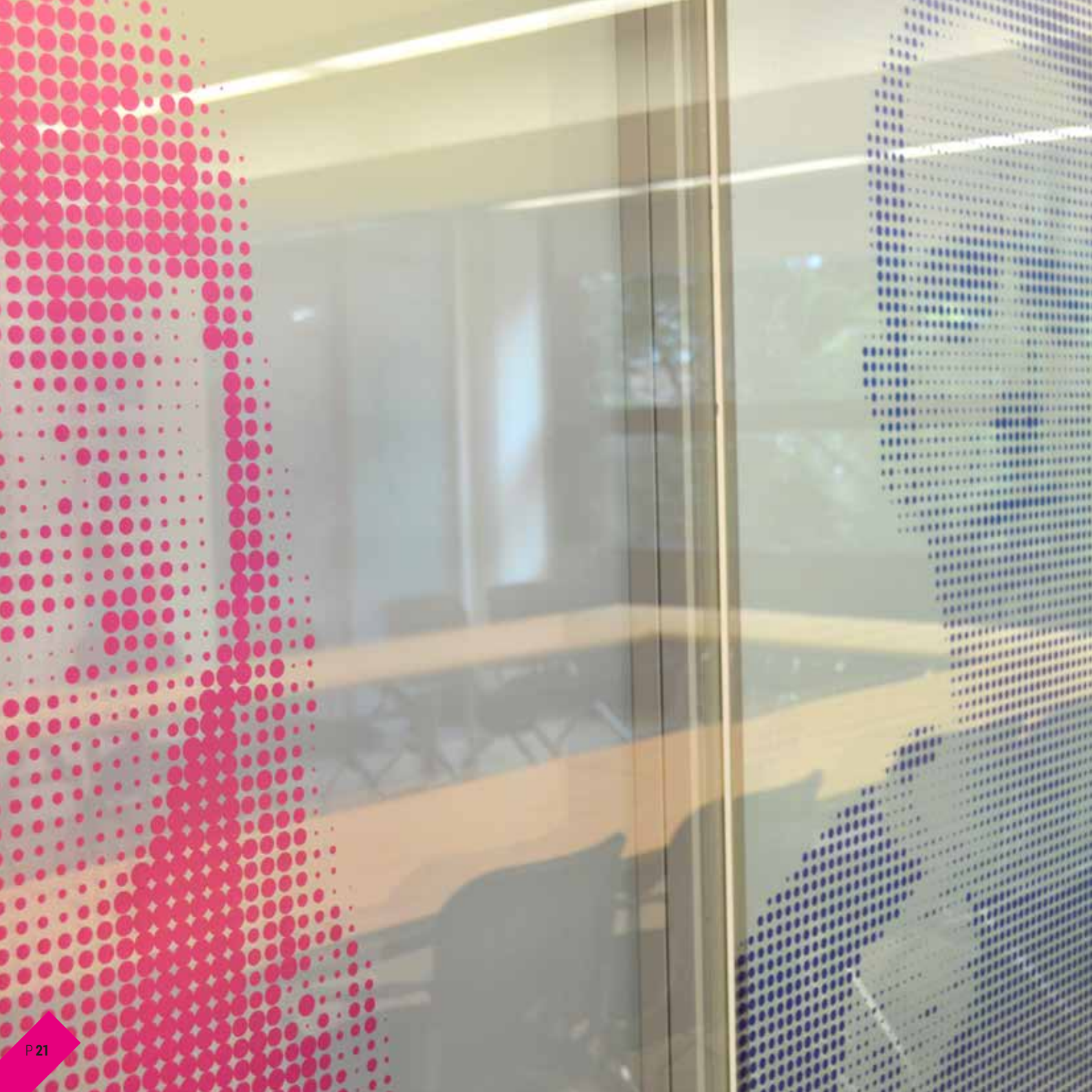




A full fabric wall using the FabriGrab system with FabriFrame doors to cover the cupboards behind. Cut acrylic letters were mounted to the fabric walls using locators to add a 3D effect.







Printed optically clear window film applied to all internal windows in one of the large boardrooms and dusted film applied to the other side of the glass.



Supporters lead
our fight against
cancer

WE'RE A
COLLECTIVE
FORCE COMING
TOGETHER TO
BEAT CANCER
SOONER

Scientists pioneer
world-leading
breakthroughs

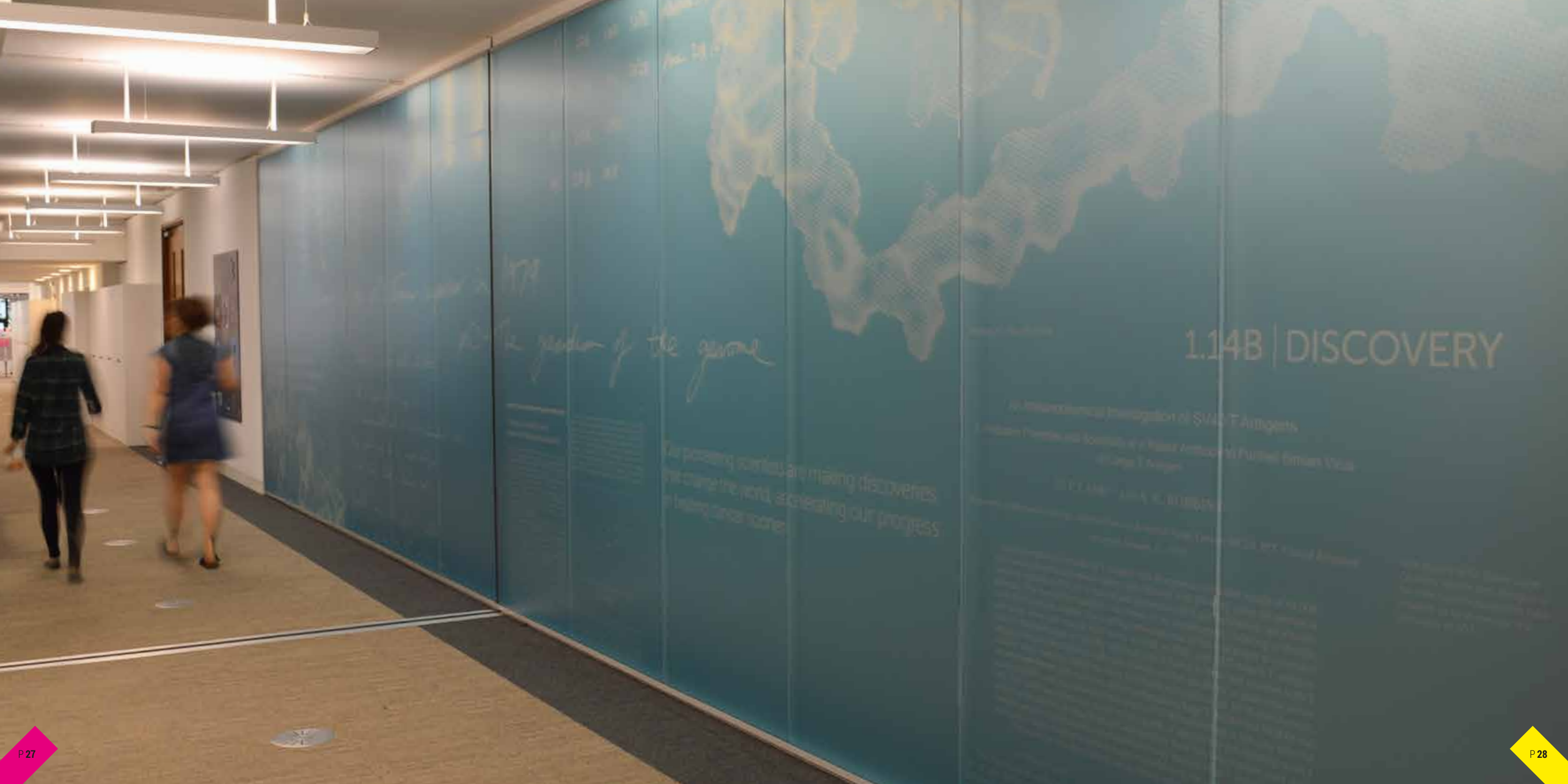
Doctors and Nurses
diagnose, treat and
cure

Volunteers carry
forward our
progress

2.8 | COLLECTIVE



Printed dusted window film to provide privacy in the informal meeting room, which was home to a large format lenticular.



1.14B | DISCOVERY

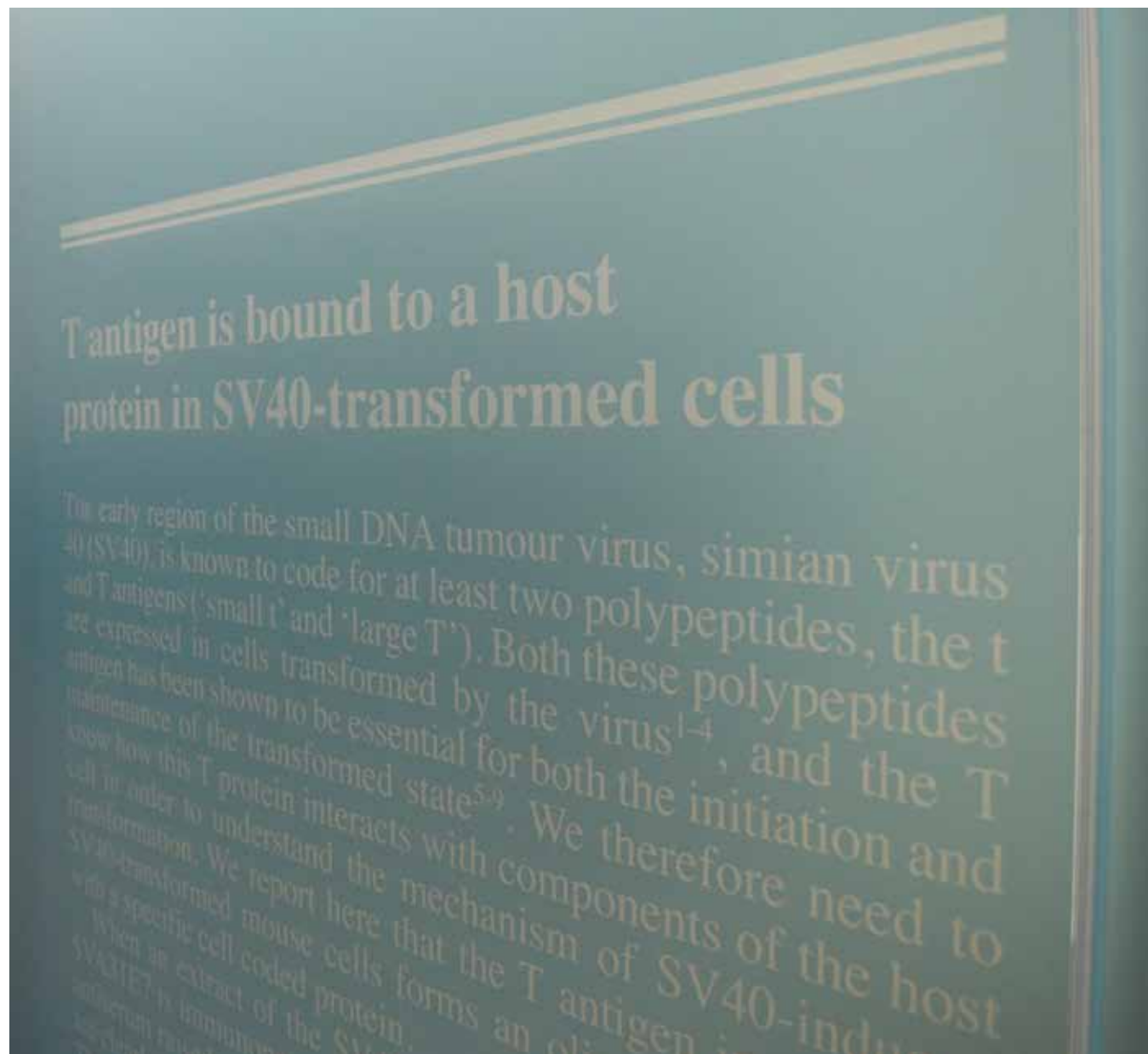
An Interdisciplinary Investigation of SARS-CoV-2 Antigens

Jonathan P. ... and ...
at ...

BY ...

The passing viruses are making discoveries
and change the world, accelerating our progress
in finding cancer cures.

The garden of the genome



Printed dusted window film with a montage of text and imagery that was based on their research and scientific discoveries.



A molecular model of p53 bound
to a spiral strand of DNA

